

FHD Camera System

MIK-13X/MIK-31X

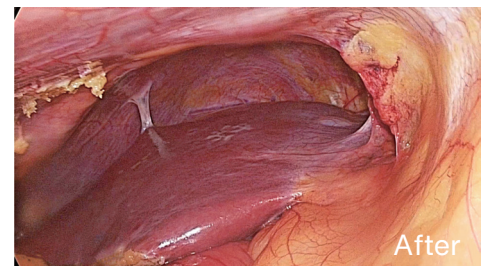
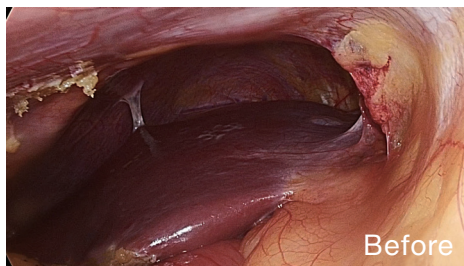


HD Camera System

Key Technologies

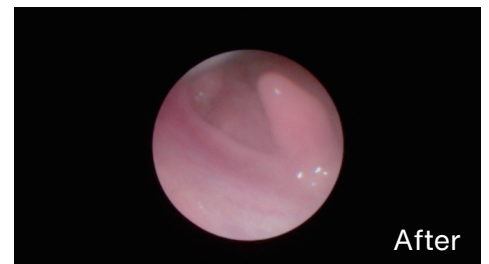
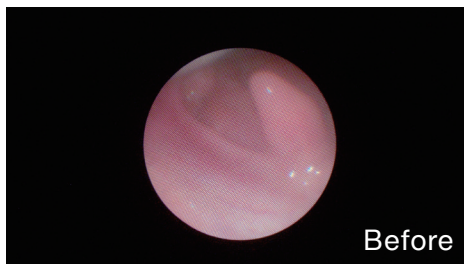
De-Dark

Generally used in laparoscopic surgery and ENT to identify dark areas and improve brightness by identifying the partial dark area of visual field, the hidden details appear, and the whole area of the surgical field is bright and transparent.



De-moiré

The original adaptive grid search algorithm intelligently identifies grid interference, weakens grid traces, repairs the loss of details, highly restores the image. Generally used in fiber lens surgery, like kidney lithotripsy surgery.



Standard HD Solution

Model	MIK-310	MIK-311	MIK-312
Video output	HDMI 1.4(1080P 60/50/30/25Hz) 3G-SDI(1080P 60/50/30/25Hz) DVI(1080P 60/50/30/25Hz)	HDMI 1.4(1080P 60/50/30/25Hz) 3G-SDI(1080P 60/50/30/25Hz) DVI(1080P 60/50/30/25Hz)	HDMI 1.4(1080P 60/50/30/25Hz) 3G-SDI(1080P 60/50/30/25Hz) DVI(1080P 60/50/30/25Hz)
Video input	Not Supported	3G-SDI(1080P 60/50/30/25Hz; 720P 60/50/30/25Hz) DVI(1080P 60/50/30/25Hz; 720P 60/50/30/25Hz)	3G-SDI(1080P 60/50/30/25Hz; 720P 60/50/30/25Hz) DVI(1080P 60/50/30/25Hz; 720P 60/50/30/25Hz)
Communication interface	RJ-232x1	RS-232x1, RJ45x1	RS-232x1, RJ45x1
User interaction	Panel: Menu	Panel: Menu	Panel: Menu
Date/Time	Supported	Supported	Supported
Capture & Record	Not Supported	1080P supported Quality settings supported	1080P supported Quality settings supported
Language	Chinese, English, Japanese Korean, Spanish, Russian, German	Chinese, English, Japanese Korean, Spanish, Russian, German	Chinese, English, Japanese Korean, Spanish, Russian, German
Power	100V-240V, 50/60Hz	100V-240V, 50/60Hz	100V-240V, 50/60Hz
Power consumption	35w maximum	35w maximum	35w maximum

Economic HD Solution

Model	MIK-130	MIK-131	MIK-132
Video output	HDMI 1.4 (1080p/60Hz) 3G-SDI (1080p/60Hz) DVI (1080p/60Hz)	HDMI 1.4 (1080p/60Hz) 3G-SDI (1080p/60Hz) DVI (1080p/60Hz)	HDMI 1.4 (1080p/60Hz) 3G-SDI (1080p/60Hz) DVI (1080p/60Hz)
Video input	Not Supported	Not Supported	DVI(1080P/60Hz) S-Video(720P/60Hz)
Communication interface	RJ-232x1	RJ-232x1, RJ45x1	RJ-232x1, RJ45x1
User interaction	Panel:Menu	Panel:Menu	Panel:Menu
Date/Time	Supported	Supported	Supported
Capture & Record	Not Supported	1080P supported Quality settings supported	1080P supported Quality settings supported
Language	Chinese, English, Japanese, Korean, Spanish, Russian, German	Chinese, English, Japanese, Korean, Spanish, Russian, German	Chinese, English, Japanese, Korean, Spanish, Russian, German
Power	100V-240V, 50/60Hz	100V-240V, 50/60Hz	100V-240V, 50/60Hz
Power consumption	35W maximum	35W maximum	35W maximum

Hangzhou Hikimaging Technology Co., Ltd

E-mail: international_sales@hikimaging.com TEL: +86 571 86610385

This material (January 2023 promotional version) is for product information and professional communication only.
This material is regularly updated, and if specifications, performance and design are changed, please refer to the latest product.
Effect pictures and images are only schematic, please refer to the actual.
The above embodied data are from the Hikimaging lab, please refer to the actual.



Hikimaging Official Website