



HAMMERTON SURGICAL CO.

ELECTROHYDRAULIC OPERATING TABLES



ELECTRIC OPERATION TABLE

HT 777



ELECTRIC OPERATION TABLE – HT 777

PRODUCT DESCRIPTION

- Five section eccentrically positioned radio-translucent table top without cross members facilitates c-arm imaging. The table top is made of specially developed radio-translucent material for excellent fluoroscopic capability.
- Operating positions i.e. Height adjustment, trendelenburg, reverse trendelenburg, lateral tilt and back section are precisely and smoothly controlled by cabled handheld remote a low voltage system is used to ensure safety of the user.
- Battery Backup: the table has a built-in battery backup system with enough power for several hours of operations in case of power failure.
- The head and leg section are removable and interchangeable, capacitating a single table's use in varied surgical procedures. These are manually operated by means of ratchet system. *built-in manually operated jack-type kidney elevator flushed with the table top without any protruding part thus allowing enhanced c-arm image intensifier maneuverability.
- Maintenance free lifting system: state-of-the-art lifting system comprising of hi-precision bearings with large contact surface which ensures the highest rigidity for heavy loads and smooth up-down movement.
- Non-corrosive ss304 grade stainless steel base and cylinder covers for easy cleaning and hygiene.
- Complete with ss304 grade stainless steel side-rails, clamps and standard accessories.
- Zero position : by simply pressing '0' position bitton on the remote , the automatically gose to its lowest height and all motorised section come to level
- Programming: the micro-processor based control system cam store upto user-programmable preset position in its memory that can be recalled anytime by simply pressing m1 or m2 button on the remote.

TECHNICAL SPECIFICATIONS

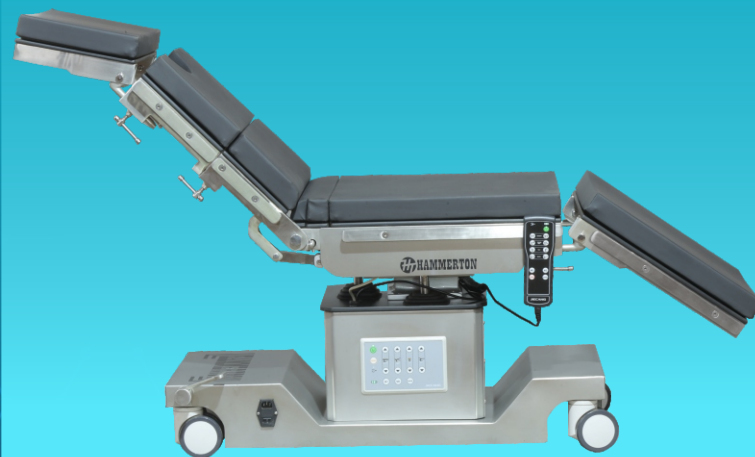
Table Top Size (L X W)	1920 X 538 Mm
Minimum Height (Without Mattress)	735 Mm
Maximum Height (Without Mattress)	985 Mm
Trendelenburg / Reversetrendelenburg	20°/20°
Lateral Tilt (left/right)	20°/20°
Back Section Adjustment	+80° / -25°
Head Section Adjustment	+40° / - 90°
Leg Section Adjustment	+15° / - 90°
Load Capacity	150 Kgs
Power Supply	220v Ac 50hz

STANDARD ACCESSORIES

'L' Shaped Anaesthetic Screen	One pc
Padded Shoulder Support	One pair
Padded Lateral Support	One pair
Radio-translucent Armboard with Pad	Two pcs
Wristlet	One pair
Goepel Knee Crutch With Straps	One pair
PU Foam Mattress	One set

ULTRA LOW HEIGHT ELECTRIC OPERATION TABLE

HT 888



ULTRA LOW HEIGHT ELECTRIC OPERATION TABLE –HT888

PRODUCT DESCRIPTION

▶ Ultra low height actuators of table

Five section eccentrically positioned radio-translucent table top without cross members facilitates c-arm imaging. The table top is made of specially developed radio-translucent material for excellent fluoroscopic capability.

Operating positions i.e. Height adjustment, trendelenburg, reverse trendelenburg, lateral tilt and back section are precisely and smoothly controlled by cabled handheld remote using actuators .

▶ Battery backup: the table has a built-in battery backup system with enough power for several hours of operations in case of power failure.

▶ The head and leg section are removable and interchangeable, capacitating a single table's use in varied surgical procedures. These are manually operated by means of ratchet system. *built-in manually operated jack-type kidney elevator flushed with the table top without any protruding part thus allowing enhanced c-arm image intensifier maneuverability.

▶ Maintenance free lifting system: state-of-the-art lifting system comprising of hi-precision bearings with large contact surface which ensures the highest rigidity for heavy loads and smooth up-down movement.

▶ Non-corrosive ss304 grade stainless steel base and cylinder covers for easy cleaning and hygiene.

▶ Complete with ss304 grade stainless steel side-rails, clamps and standard accessories.

▶ Zero Position : by simply pressing '0' position bitton on the remote , the automatically gose to its lowest height and all motorised section come to level

▶ Programming: the micro-processor based control system cam store upto user-programmable preset position in its memory that can be recalled anytime by simply pressing m1 or m2 button on the remote.

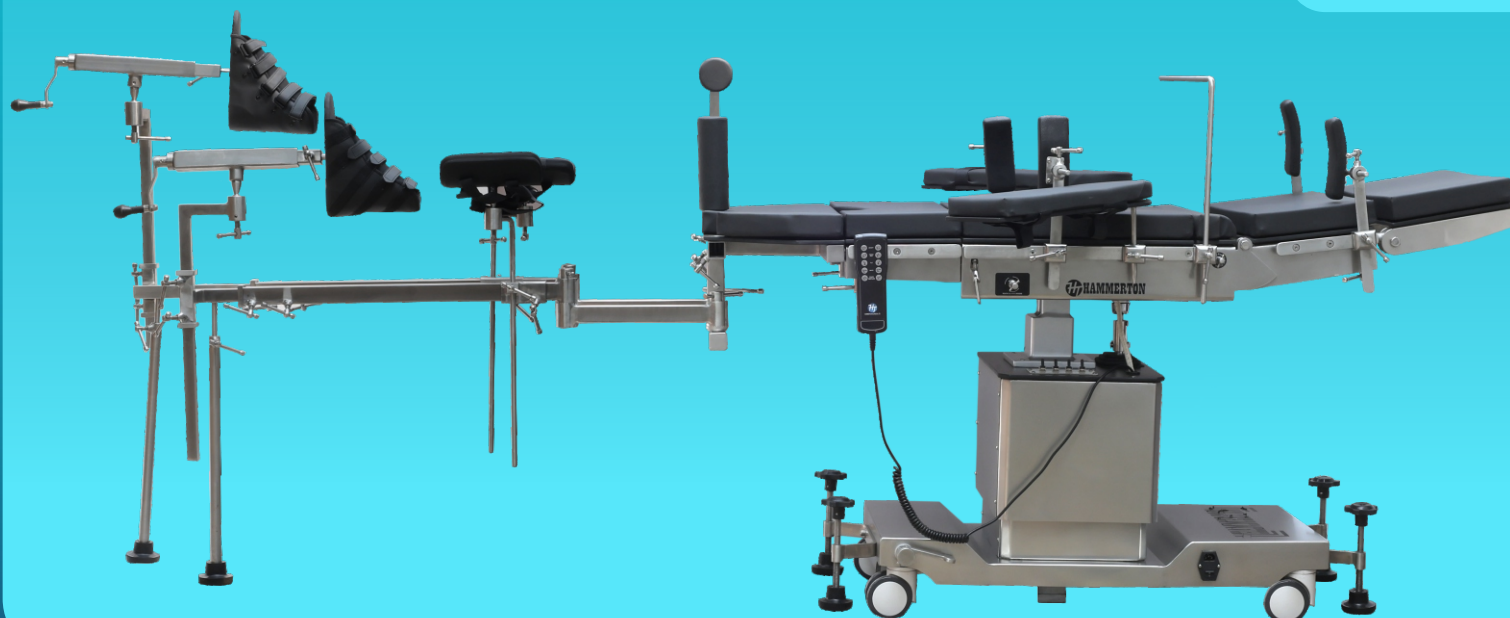
TECHNICAL SPECIFICATIONS

Table Top Size (l x w)	1900 x 530 mm
Minimum Height (Without mattress)	550 mm
Maximum Height (Without mattress)	800 mm
Trendelenburg / reversetrendelenburg	20°/20°
Lateral Tilt (left/right)	20°/20°
Back Section Adjustment	+80° / -25°
Head Section Adjustment	+40° / - 90°
Leg Section Adjustment	+15° / - 90°
Load Capacity	180 kgs
Power Supply	220v ac 50hz

STANDARD ACCESSORIES

'I' Shaped Anaesthetic Screen	One pc
Padded Shoulder Support	One pair
Padded Lateral Support	One pair
Radio-translucent Armboard with Pad	Two pcs
Wristlet	One pair
Goepel Knee Crutch With Straps	One pair
PU Foam Mattress	One set

**ELECTRIC PLUS MANUAL OVERRIDE
WITH REVERSE ORIENTATION OPERATING
TABLE WITH ORTHO ATTACHMENT
HT 555**



ELECTRIC PLUS MANUAL OVERRIDE WITH REVERSE ORIENTATION OPERATING TABLE WITH ORTHO ATTACHMENT HT555

SPECIAL FEATURES

- **Reverse Orientation**
- **Flex Reflex**
 - **Battery Backup** – Built-in Battery Backup System to ensure operational readiness in case of power supply interruptions.
 - **Over ride Control System** – The table is equipped with a Hand crank operated Manual Override System to ensure functionality without any interruption in case of power failure or even remote.

PRODUCT DESCRIPTION

- **Six sectional stainless steel top.**
- **Complete with SS304 Grade Stainless Steel.**
- **Mobile on smooth running castors.**
- **Inbuilt kidney bridge**
- **Floor locking system for stability.**
- **Head and Leg Section are removable and interchangeable**

STANDARD POSITIONING

- **Height updown**
- **Trendelenburg reverse trendelenburg**
- **Lateral Tilt both sides**
- **Chair Position**
- **Kidney Elevation**
- **Flex Reflex**

TECHNICAL SPECIFICATIONS

Table Top Size (LxW)	2160 x 535mm
Minimum Height (Without mattress)	760 mm
Maximum Height (without mattress)	1010 mm
Trendelenburg / Reversetrendelenburg	20°/20°
Lateral Tilt (Right/Left)	20°/20°
Back Section Adjustment	+80° / -25°
Head Section Adjustment	+40° / - 90°
Leg Section Adjustment	+15° / - 90°
Load Capacity	180 KGS
Power Supply	220V AC 50HZ

STANDARD ACCESSORIES

Anesthetic Screen	One nose
Shoulder Supports with pads	One pair
Arm Boards with pads	One pair
Lateral Support with pad	One pair
Knee Crutches Goepel Type	One pair
PU foam Mattress	One set

ELECTRO HYDRAULIC OPERATION TABLE HT 999



ELECTRO HYDRAULIC OPERATION TABLE – HT – 999

PRODUCT DESCRIPTION

- Five Section eccentrically positioned radio-translucent table top without cross members facilitates C-arm imaging. The table top is made of specially developed radio-translucent material for excellent fluoroscopic capability.
- Operating positions i.e. Height adjustment, Trendelenburg, Reverse Trendelenburg, Lateral Tilt and Back Section are quickly and precisely controlled by handheld Remote with symbolic position figures using low voltage system to ensure safety of the user.
- The powered movements are actuated by an Imported Electro-hydraulic System comprising of hydraulic motor pump with low noise level of less than 50dBA and solenoid valves to assure smooth and quiet movements.
- The Head and Leg Section are removable and interchangeable, capacitating a single table's use in varied surgical procedures. These are manually operated by means of ratchet system.
- Maintenance Free Lifting System: State-of-the-art lifting system comprising of hi-precision bearings with large contact surface which ensures the highest rigidity for heavy loads and smooth up-down movement. All bearings are permanently grease lubricated thus making this lifting system virtually maintenance free for lifetime.
- Non-corrosive SS304 Grade Stainless Steel base and cylinder covers for easy cleaning and hygiene.
- Beautifully finished with silver metallic PU paint and all stainless steel parts are matt finished.
- Complete with SS304 Grade Stainless Steel side-rails, clamps and standard accessories.

TECHNICAL SPECIFICATIONS

Table top size (L x W)	2160 x 535 mm
Minimum height (without mattress)	725 mm
Maximum height (without mattress)	1035 mm
Trendelenburg / ReverseTrendelenburg	30o / 30o
Lateral Tilt (Left/Right)	20o / 20o
Back section adjustment	+80o / – 30o
Head section adjustment	+40o / – 90o
Leg section adjustment	+ 15o / – 90o
Load capacity	200 Kgs
Power supply	220V AC – 50Hz

STANDARD ACCESSORIES

'L' shaped Anaesthetic Screen	One pc
Padded Shoulder Support	One pair
Padded Lateral Support	One pair
Radio-translucent Armboard with pad	Two pcs
Wristlet	One pair
Goepel Knee Crutch with straps	One pair
PU Foam Mattress	One set

**ELECTRO HYDRAULIC WITH
TOP SLIDE OPERATION TABLE
HT 1000**



ELECTRO HYDRAULIC WITH TOP SLIDE OPERATION TABLE

PRODUCT DESCRIPTION

- Five Section eccentrically positioned radio-translucent table top without cross members facilitates C-arm imaging. The table top is made of specially developed radio-translucent material for excellent fluoroscopic capability.
- Table Top Slide : The tabletop can slide longitudinally towards headend and legend to facilitate better access for C-arm Image Intensifier.
- Operating positions i.e. Height adjustment, Trendelenburg, Reverse Trendelenburg, Lateral Tilt, Back Section and Longitudinal Slide are quickly and precisely controlled by handheld Remote with symbolic position figures using low voltage system to ensure safety of the user.
- The powered movements are actuated by an Imported Electro-hydraulic System comprising of hydraulic motor pump with low noise level of less than 50dBA and solenoid valves to assure smooth and quiet movements.
- The Head and Leg Section are removable and interchangeable, capacitating a single table's use in varied surgical procedures. These are manually operated by means of ratchet system.
- Maintenance Free Lifting System: State-of-the-art lifting system comprising of hi-precision bearings with large contact surface which ensures the highest rigidity for heavy loads and smooth up-down movement. All bearings are permanently grease lubricated thus making this lifting system virtually maintenance free for lifetime.
- Non-corrosive SS304 Grade Stainless Steel base and cylinder covers for easy cleaning and hygiene.
- Beautifully finished with silver metallic PU paint and all stainless steel parts are matt finished.
- Complete with SS304 Grade Stainless Steel side-rails, clamps and standard accessories.

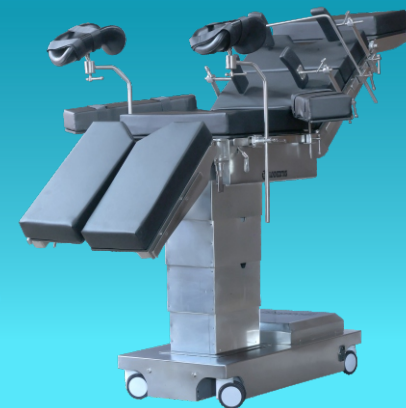
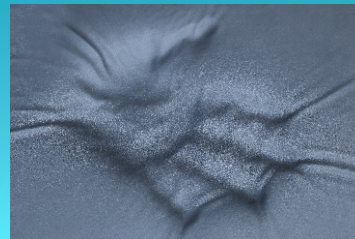
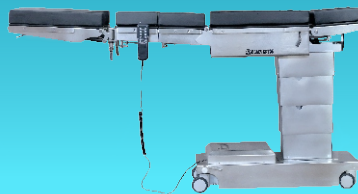
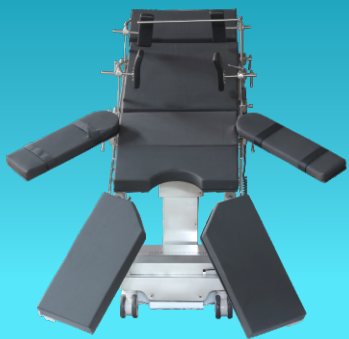
TECHNICAL SPECIFICATIONS

Table top size (L x W)	2160 x 535 mm
Minimum height (without mattress)	725 mm
Maximum height (without mattress)	1035 mm
Trendelenburg / ReverseTrendelenburg	30o / 30o
Lateral Tilt (Left/Right)	20o / 20o
Back section adjustment	+80o / - 30o
Head section adjustment	+40o / - 90o
Leg section adjustment	+ 15o / - 90o
Longitudinal Slide	300 mm
Load capacity	200 Kgs
Power supply	220V AC - 50Hz

STANDARD ACCESSORIES

'L' shaped Anaesthetic Screen	One pc
Padded Shoulder Support	One pair
Padded Lateral Support	One pair
Radio-translucent Armboard with pad	Two pcs
Wristlet	One pair
Goepel Knee Crutch with straps	One pair
PU Foam Mattress	One set

SUPER ULTRA LOW ELECTRO HYDRAULIC OPERATION TABLE HT 2100



SUPER ULTRA LOW ELECTRO HYDRAULIC OPERATION TABLE- HT - 2100

PRODUCT DESCRIPTION

- Five Section eccentrically positioned radio-translucent table top without cross members facilitates C-arm imaging. The table top is made of specially developed radio-translucent material for excellent fluoroscopic capability.
- **Table Top Slide:** The tabletop can slide longitudinally towards headend and legend to facilitate better access for C-arm Image Intensifier.
- Operating positions i.e. Height adjustment, Trendelenburg, Reverse Trendelenburg, Lateral Tilt, Back Section and Longitudinal Slide are quickly and precisely controlled by handheld Remote with symbolic position figures using low voltage system to ensure safety of the user.
- Controls on column, hand control with wire.
- The powered movements are actuated by an Imported Electro-hydraulic System comprising of hydraulic motor pump with low noise level of less than 50dBA and solenoid valves to assure smooth and quiet movements.
- The Head and Leg Section are removable and interchangeable, capacitating a single table's use in varied surgical procedures. These are manually operated by means of ratchet system.
- **Maintenance Free Lifting System:** State-of-the-art lifting system comprising of hi-precision bearings with large contact surface which ensures the highest rigidity for heavy loads and smooth up-down movement. All bearings are permanently grease lubricated thus making this lifting system virtually maintenance free for lifetime.
- Non-corrosive SS304 Grade Stainless Steel base and cylinder covers for easy cleaning and hygiene.
- Beautifully finished with silver metallic PU paint and all stainless steel parts are matt finished.
- Complete with SS304 Grade Stainless Steel side-rails, clamps and standard accessories.

TECHNICAL SPECIFICATIONS

Table top size (L x W)	2160x 535 mm
Minimum height (without mattress)	500 mm
Maximum height (without mattress)	1030 mm
Trendelenburg / Reverse Trendelenburg	25o / 25o
Lateral Tilt (Left/Right)	20o / 20o
Back section adjustment	+80o / - 30o
Head section adjustment	+40o / - 90o
Leg section adjustment	+ 15o / - 90o
Longitudinal Slide	300 mm
Load capacity	200 Kgs
Power supply	220V AC - 50Hz

STANDARD ACCESSORIES

'L' shaped Anaesthetic Screen	One pc
Padded Shoulder Support	One pair
Padded Lateral Support	One pair
Radio-translucent Armboard with pad	Two pcs
Wristlet	One pair
Goepel Knee Crutch with straps	One pair
High Quality Memory Foam Mattress	One set

LIGHT **500/700 CEILING OPERATING LAMP ALUMINUM COVER**



LED Screen Keyboard



New Cold LED Lights



500/700 CEILING OPERATING LAMP ALUMINUM COVER

PRODUCT DESCRIPTION

- ▶ Super slim aluminum alloy back cover with advanced integrated modling design, achieved superb heat dissipation effect.
- ▶ High efficiency beads layout is superior than other type designs, can get an almost unlimited LED life expectancy. Life span is almost to 10,0000 hours.
- ▶ German OSRAM LED beads and French GAGGIONE lens guarantee a uniform nature cool lighting in suefaced deep cavity procedures. 360° rotation lamp head.
- ▶ New world advanced automatic shadow eliminate technology, without user's manual head adjusting angle, it combines anti-dizziness and spot balance overlay control, this 500/700 aluminum cover type get a 99.99% shadow eliminate performance.
- ▶ Adopted single 1W LED beads, lighting double traverse technology combine automatic shadow eliminating tech and anti-diziiness tech.
- ▶ The shell cover has great heat dissipation, generating essentially ZERO infrared or ultraviolet light.
- ▶ 500/700 color temperature: 3,700-5,000K, Color rendering: 97. Intelligent spot homogeneous tech.
- ▶ **NEW systems high illumination**
500/700, 500(160,000Lux) and 700(180,000Lux).
New systems with higher illumination values can compensate maintained illuminance by ageing, working life and environmental influences.
- ▶ **Manual Focus**
LCD screen panel control, endoscopy standard.
- ▶ **Double traverse lighting + Automatic Shadow eliminate technology+ anti-dizziness resolve**
Greater light output is 2 or 3 times higher than other lights, clear spot profile and uniform illumination to deep cavity procedures.
- ▶ **New Cold LED light Source**
Lowest ultraviolet and infrared in light spectrum, temperature rising less than 2°C. single 1W German LED cost effective for hospitals.
- ▶ **Long Service Life Span**
At least 100,000 hours LED life span, no need to replace LED beads. Low lifetime maintenance cost.



Warm Light



Neutral Light



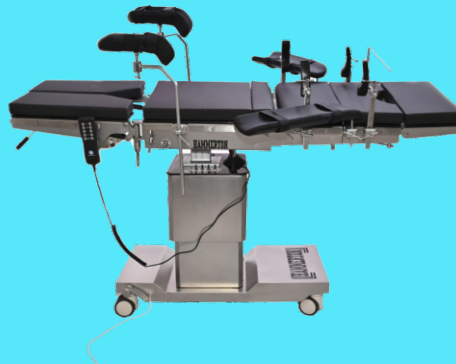
Cool Light/Day Light

TECHNICAL SPECIFICATIONS

Technical Data	Unit	700 Lamp Head	500 Lamp Head
Spot center Illumination in color temperature 5000K	Lux	130,000-180,000	130,000-160,000
Color Temperature	K	3700-5000	3700-5000
Ra		97	97
50% spot diameter d50	mm	150	150
10% spot diameter d10	mm	260	260
illumination depth	mm	140	120
illumination adjusting range	%	25-100	25-100
ultraviolet irradiance wavelength under 40nm	W/m2	≤0.02	≤0.02
Focal distance adjusting mode		manual/electric optional	manual/electric optional
Beads power	W	1W unit *80 LEDs	1W unit x48 LEDs
Power supply	V/Hz	110V/220V, 50HZ/60Hz	110V/220V, 50HZ/60Hz
Input power	W	100	100
LED average life	Hours	≤100,000	≤100,000
Installation ceiling height	m	2.65-3.2 (8.69'-10.5')	2.65-3.2 (8.69'-10.5')
Type choice	camera monitor	single head floor standing/ceiling type	single/double/triple head ceiling



HAMMERTON SURGICAL CO.



HAMMERTON SURGICAL CO.

Near State Ware House, New Timber & Steels Market, Bhiwani - 127021 Haryana

Contact : +91 9812068060, +91 9518052156 | Website - www.htsurgical.com